

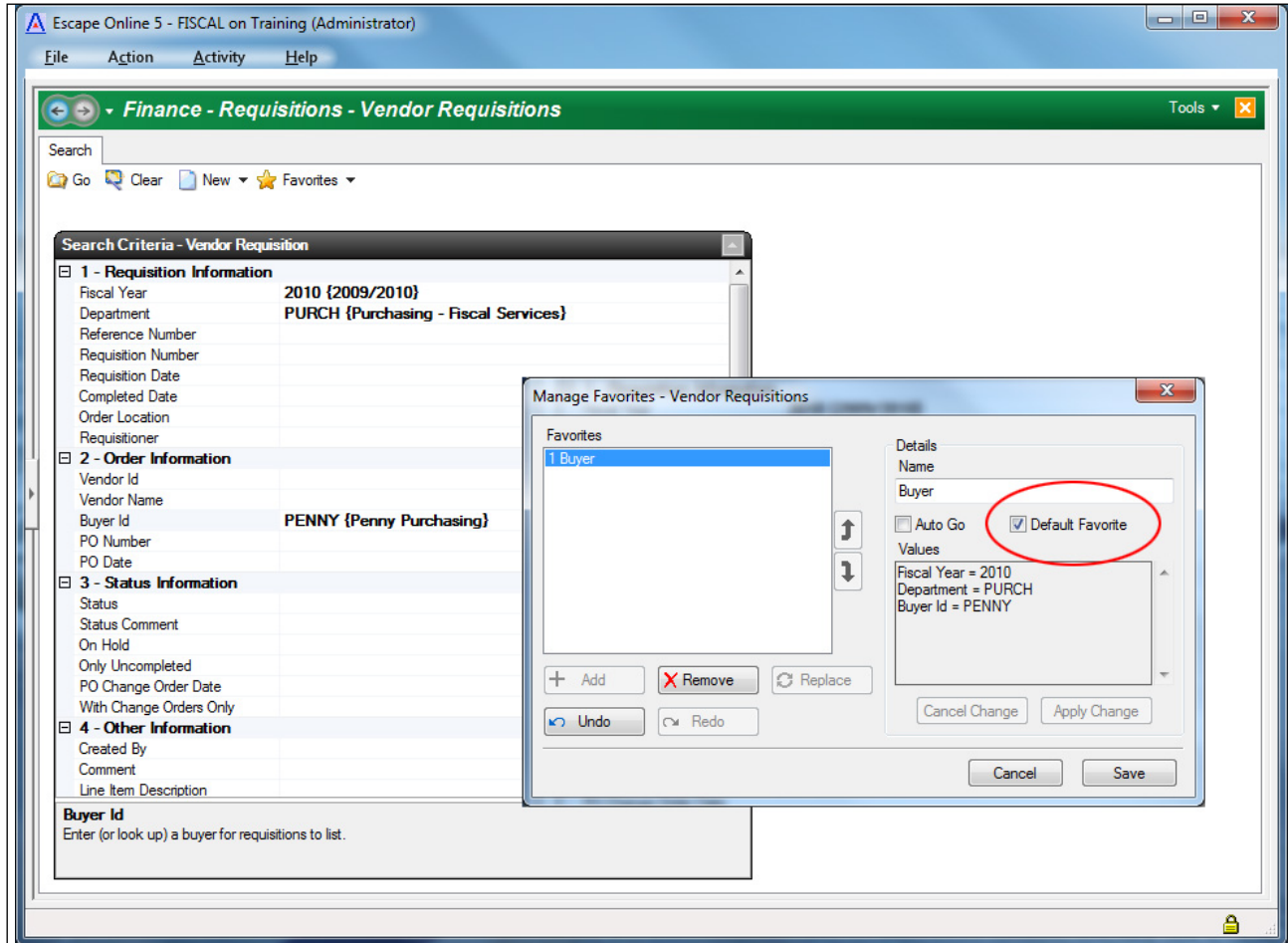
Escape Online 5, Known Issues for Version 10.01



V10.01

Escape Online Known Issues

Integrated Financial, Human Resources and Payroll Information System Software



List of Known Issues

Known issues are defined as problems that have been reported and scheduled to be fixed. As issues are resolved, they will be removed from this list and reported in the release notes.

CR #: **Subject:**

Finance	AP
----------------	-----------

7577 Cannot use Search when AP - Checks/Payments activity is Read only

Finance	AP	Checks
----------------	-----------	---------------

7482 When a check is cancel/reissued for the prior year that is still open, the cancel JE should be posted to the prior year

7526 Re-encumber the reqs when AP check is cancelled and return fields to original amts

7835 Do not allow Payroll Vendor checks to be Cancelled and Reissued.

Finance	AP	Enter Payments
----------------	-----------	-----------------------

6962 When entering payments against a completed vendor requisition, force final payment = Yes

7423 If user manually adds the Unpaid Sales Tax account to a payment and also sets the Unpaid tax amount, the expense journal is incorrect

Finance	AR	Invoices
----------------	-----------	-----------------

8588 (YE) When you copy an invoice after it has been processed on the req year end list, the receivable account copies too

Finance	AR	Print Invoices
----------------	-----------	-----------------------

8425 Created by filter is not passed to Invoice printing when used to build a list in Print Invoices

9322 Add sort options for AR Invoice printing

Finance	AR	Receipts
----------------	-----------	-----------------

8229 Create ability to unpost AR Receipts

Finance	Assets	Fixed Assets
----------------	---------------	---------------------

5818 Disposal Method Lookup needs to filter by org

Finance	Fiscal	Budget Entry
----------------	---------------	---------------------

7994 Salary fields on non-salary budget entry form

Finance	Fiscal	Budget Management
----------------	---------------	--------------------------

7200 Misc contribs with method P1 or P2 should use item amount to calculate

CR #: Subject:

- 7257 Multi-Year Budgeting Part 1 Fixes
- 8257 Object 8092 not being included in Load from Salaries in Budget Management
- 8327 Budget load from HR is not setting subject gross amounts correctly

Finance Fiscal Budget/JE Approvals

- 6317 Error opening JE after changed Effective date is saved from Approval list

Finance Fiscal County Journal Entries

- 4179 Cannot put County JE on hold
- 8544 Warnings fill up event viewer when JE is opened from the list and client sometimes shuts down when you scroll JE Items

Finance Fiscal Journal Entries

- 5992 JE should not use "close cash" date when no change to cash
- 7335 Stack trace error when entering JE's using account widget
- 9348 Manually posting a copied system journal should use that journals numbering sequence instead of the General JE sequence

Finance Processes Print AP Checks

- 6826 Make Bank Account a required field in Print AP Checks

Finance Processes Req Year End Closing

- 8507 (YE) FiscalYearEnd99a - Not filtering by reference and User account permissions; doesn't show accounts when account aliases are turned on
- 8542 (YE) Problems with Dept Requisitions Processing on Requisition Year End Closing List
- 8543 Ability to process an AR Invoice that has been carried over from a prior year already

Finance Purchasing Print Original POs

- 7733 Print PO and Print PO Copy activities require dept in user setup

Finance Purchasing Receive PO Items

- 6569 Prevent creation of multiple assets when re-receiving a line item

Finance Reports Fiscal

- 8383 Budget10 - Object Digit Subtotaling

Finance Reports Ledger

CR #: Subject:

- 7603 Assignment and Addon Credential validation should only occur when the job class has a pay code
- 7633 Receiving Error in Adjusted Days field when trying to end an assignment with a manual calendar early
- 7671 Save/Close is not available when adding a new addon to employee
- 7867 When adding an addon that requires salary schedule rate 1 amount shows incorrectly until after employee record is saved
- 8039 Bogus warning in assignment - calendar has excessive unpaid days on pay period % salary schedule
- 8273 Address fields are not working correctly - mailing address cannot be cleared.
- 8302 Addon with future date (07/01/09) is missing from the Addon Lookup on the Employee Addon Tab

HR/Payroll	Employment	Leave Status
-------------------	-------------------	---------------------

- 8180 When leaves are Unposted, HRPayLeave.PayAdjustID is not cleared

HR/Payroll	Employment	Leave Transactions
-------------------	-------------------	---------------------------

- 7349 When leave batch is posted the status should change to Posted instead of Completed
- 8216 When software docks for negative leave balance that also has an alt. leave balance attached, a positive adj s/b posted to all leave balances

HR/Payroll	My Reports
-------------------	-------------------

- 8548 My Reports - Task>Forward Report not working in .NET 3.5

HR/Payroll	Payroll
-------------------	----------------

- 8381 HREmploymentExt Extended records are not showing up on the List tab in Employee pay Management and Employee Payroll Setup activities

HR/Payroll	Payroll	Adjust Payroll
-------------------	----------------	-----------------------

- 6887 Retirement contribution code incorrect on the Addon form when pay cycle period dates are backdated
- 7805 PERS - Missing ER Contributions if earnings are forced to OT
- 7908 Allow users to delete adjustments triggered by Timecard Assignment Cancellation
- 8046 Manual Payroll Period Date Changes
- 8149 Pay Period Tax Setup Overrides in Adjust pay are not working
- 8183 Assignments paying incorrectly

CR #: Subject:

- 8184 Pay Cycle Period is not calculated if employee changes pay cycle
- 8391 ER Contributions should calculate on Arrears periods even if there are no earnings
- 8496 Timecard Assignments need to encumber salary
- 9132 Adjust Payroll v.2
- 9135 Payroll Error should be generated if OrgPayAddon record has been ended but there are open ended HRPaySetupAddon rows for this addon

HR/Payroll Payroll Employee Pay Management

- 8897 Receiving Publication in Pay Management activity when trying to Search for Current FTE

HR/Payroll Payroll Employee Payroll Setup

- 7635 Creating new Employee Pay Cycle record doesn't set off a job
- 7848 Should not be able to set up ACH with overlapping dates or distribution percentage > 100%

HR/Payroll Payroll Pay Manual Checks

- 5902 If you do not submit manual checks before FY end you will receive error
- 7643 Addignment rate not populating in Pay Manual Checks and Adjust Payroll activitiesm

HR/Payroll Processes Payroll Processing

- 7739 Manual payroll gets stuck in approving status if any org has manual pay for 0 amount

HR/Payroll Reports Leave

- 7854 Leave05 - Report changes

HR/Payroll Reports Payroll

- 8332 Pay10 - Option (c) does not include units if the addon Rate1Opt = Open to Change

HR/Payroll Reports Position Control

- 8372 Pos04 - Report Changes

HR/Payroll Retirement PERS Offline Import

- 6888 PERS Offline import converts paycode of 0 to 1 instead of 0

HR/Payroll Retirement PERS Processing

- 5917 Services are determining edit roles instead of the xml

HR/Payroll Retirement STRS Editor

CR #: Subject:

9017 Selecting CC 0 from lookup does not save in field, must type in 0 in order to make it stick

HR/Payroll Retirement STRS Processing

7821 STRS and PERS reporting of Retro Pay contribution lines should be collapsed based on Fiscal Year

HR/Payroll Setup Assignment - Job Categories

5533 (*) - Update Sal Sched info in job classes

HR/Payroll Setup Assignment - Salary Schedules

6395 Rounding not as expected when doing a mass change

7830 Retro Flag in the Salary Schedule Setup should never be locked even if the SS was used in pay

HR/Payroll Setup Benefit Providers

7811 Refund Amount setup in the Benefit Provider Level generates addons but shouldn't

HR/Payroll Setup Credentials - Majors

7486 Receiving error when choosing a Category while trying to create a new Credential Major or Minor Record

HR/Payroll Setup Payroll - Addons

8005 Should not be able to set default retire plan when set rate=Y, and should not be able to set contribution codes to zero when retire plan present

HR/Payroll Setup Payroll - Contrib/Deduct Groups

9142 Some reports are using OrgPayDeductGroup but UI only allows for setup in SysPayDeductGroup

HR/Payroll Setup Payroll - Contribution Mgmt

6723 Contribution Code missing a Vendor should generate a General Error during calculation of pay

7244 Amt/Percent field in Pay Contribution is blank but it is locked in Org Contribution record

HR/Payroll Setup Payroll - Contributions

7085 Contributions setup with Calculation Ranges looking at bargaining units are not calculating on non-regular payrolls

HR/Payroll Setup Payroll - Pay Cycles

5534 Do not allow users to edit pay cycles ETS ETC ETR

HR/Payroll Setup Payroll - Pay Schedules

7915 Pay Period Type lookup needs codes

Infrastructure

8923 Need to add an error when adding an excel file as an attachmment, if the excel file is open

Infrastructure EscapeType

8359 Need to be able to use account wildcards in report requests

System Setup Fiscal Year Status

6648 Copy fiscal year status - Warning (copy operation failed - object not set to an instance of an object)

7043 (YE) Change Roll Forward Pos Assignments task to be run from "next" fiscal year

8419 (YE) Year End: Task "Roll Forward Pos Assignments" should be greyed out if assignments have been paid on

System Setup Organizations

5951 Organization ledger tab allows overlapping setup

System Setup Users

5493 User defined permission with bad role returns "No descendent window pane" error

5537 Journal Entry, Budget Transfer and Vendor Req activities assigned via UDP's missing new button

7377 Defining component permission values greater than 60 characters cause problems in several activities

8331 Problem when new User Copy has permissions deleted - permissions are deleted from the user that was copied